

Sable 425-440W

High efficiency bifacial modules



TOPCon 182mm

• **TOPCon MODULE ADVANTAGE**

- Multi-Busbar technology
- Superior load capacity
- High module efficiency
- Excellent low-light performance
- Lower annual attenuation
Longer warranty
- Low BOS and LCOE
- Reduce hot spot effect
- Higher bifaciality

• **QUALITY SYSTEM**

ISO9001 / ISO14001 / ISO45001

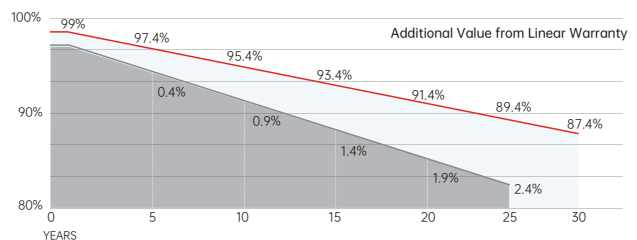
• **PRODUCT CERTIFICATION**



• **INSURANCE**



• **WARRANTY**



30 YEARS Guarantee on product material and workmanship

30 YEARS Linear power output warranty

*Subject to the terms and conditions contained in the applicable Seraphim Solar System Co., Ltd. Warranty Statement. This 30-year product warranty is only applicable for products installed and operating on residential rooftops in certain regions.



Jiangsu Seraphim Solar System Co., Ltd.

Add: NO.10 TongShun road, Henglin Town, Wujin District, Changzhou, Jiangsu Province, China.
Tel: +86-564-7736177 Email: info@seraphim-energy.com

Electrical Characteristics

Module Type	SRP-425-BTD-HV		SRP-430-BTD-HV		SRP-435-BTD-HV		SRP-440-BTD-HV	
	STC	NOCT	STC	NOCT	STC	NOCT	STC	NOCT
Maximum Power at STC (P_{mp})	425	320	430	324	435	328	440	332
Open Circuit Voltage (V_{oc})	38.70	36.77	38.90	36.96	39.10	37.15	39.30	37.34
Short Circuit Current (I_{sc})	13.91	11.13	13.99	11.19	14.07	11.26	14.15	11.32
Maximum Power Voltage (V_{mp})	32.10	30.21	32.30	30.41	32.50	30.62	32.70	30.82
Maximum Power Current (I_{mp})	13.24	10.59	13.32	10.66	13.39	10.71	13.47	10.77
Module Efficiency at STC (η_m)	21.76		22.02		22.28		22.53	
Power Measurement Tolerance	± 3%							
Power Sorting Tolerance(W)	-5W~+5W							
Maximum System Voltage	1500V DC							
Maximum Series Fuse Rating	25 A							

STC: Irradiance 1000 W/m² module temperature 25°C AM=1.5 Power measurement tolerance: +/-3%;
 Voltage measurement tolerance: +/-3%; Current measurement tolerance: +/-4%

Temperature Characteristics

Pmax Temperature Coefficient	-0.29 %/°C
Voc Temperature Coefficient	-0.25 %/°C
Isc Temperature Coefficient	+0.046 %/°C
Operating Temperature	-40 ~ +85 °C
Nominal Operating Cell Temperature(NOCT)	45±2 °C

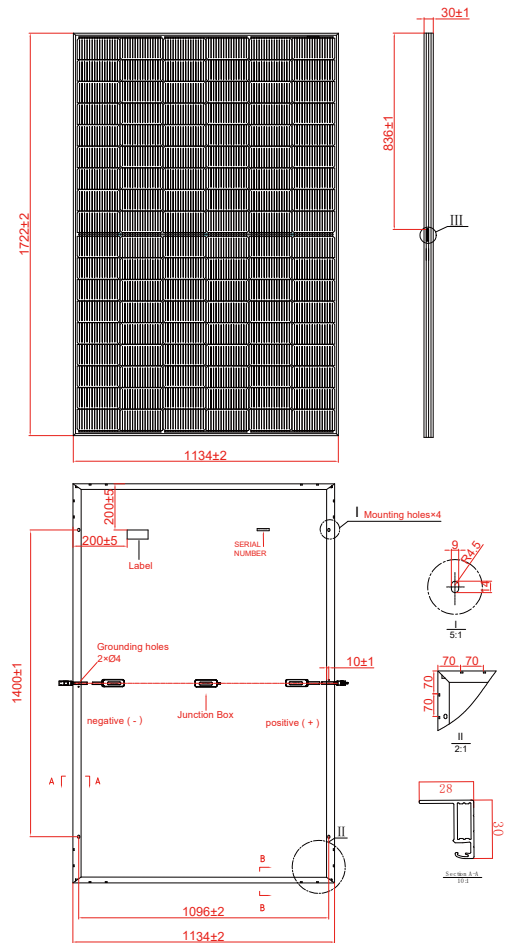
Mechanical Specifications

External Dimensions	1722 x 1134 x 30 mm
Weight	21.5 kg
Solar Cells	TOPCon 182 x 91mm (108 pcs)
Front Glass	3.2mm AR coating tempered glass, low iron
Frame	Black anodized aluminium alloy
Junction Box	IP68, 3 diodes
Output Cables	4.0mm ² , 250mm(+)/350mm(-) or Customized Length
Mechanical Load	Front side 5400Pa/ Rear side 2400Pa
Connector	Genuine MC4 EVO2/Zerun Z45-abcde/QC Solar QC4.10-cds
Fire safety class	Class C

Packing Configuration

	1722 x 1134 x 30 mm	
Container	20'GP	40'HQ
Pieces per Pallet	40	36
Pallets per Container	6	26
Pieces per Container	240	936

For details, please consult SERAPHIM.



I-V Curve

